

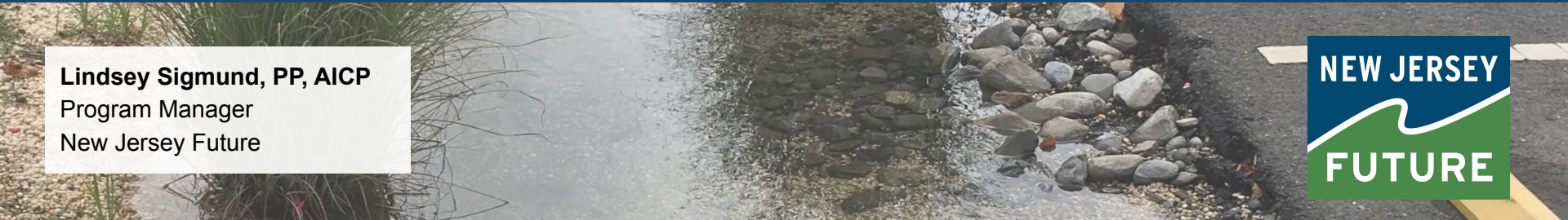


# New Jersey's Tier A MS4 Permit

JWW GI Committee

April 2022

**Lindsey Sigmund, PP, AICP**  
Program Manager  
New Jersey Future



# MS4 Overview

- **MS4 = Municipal Separate Storm Sewer System**
- Based on National Pollution Discharge Elimination System provisions
- New Permit effective January 1, 2023, prior effective 2018
- All municipalities subject to the requirements
- Reflects a shift toward watershed level planning to address water quality issues and flooding



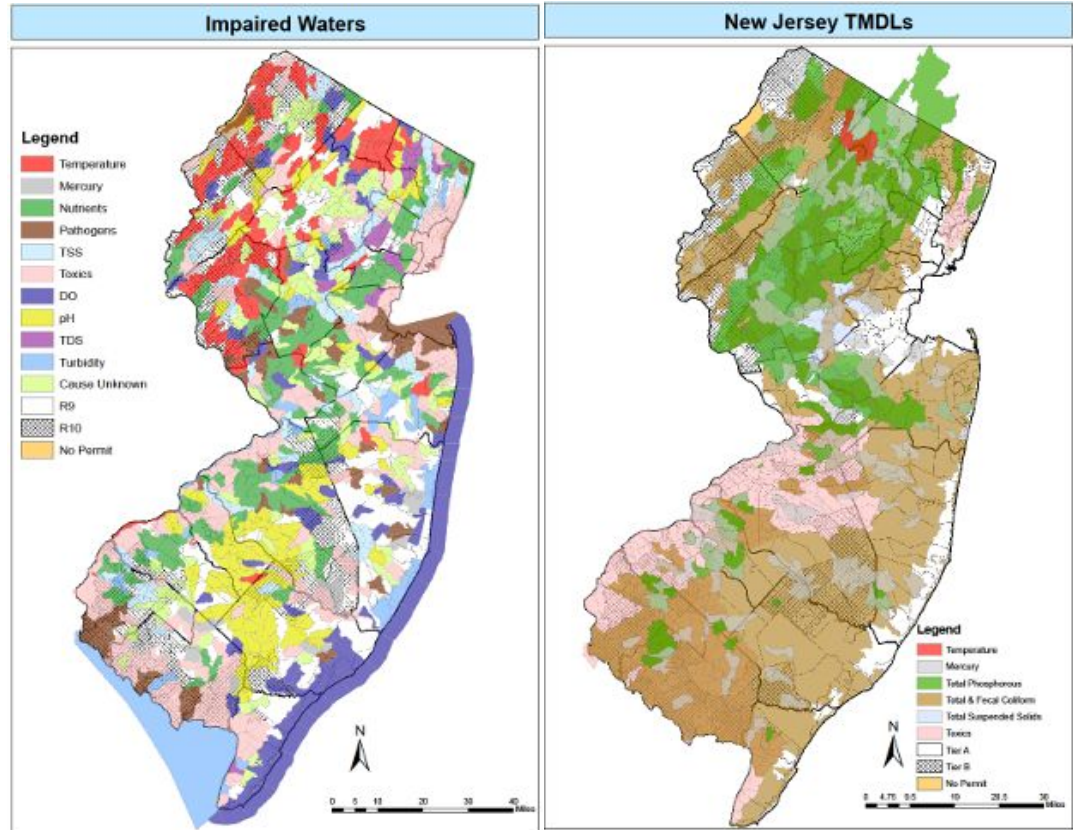
# MS4 Overview

## 6 Statewide Basic Requirements

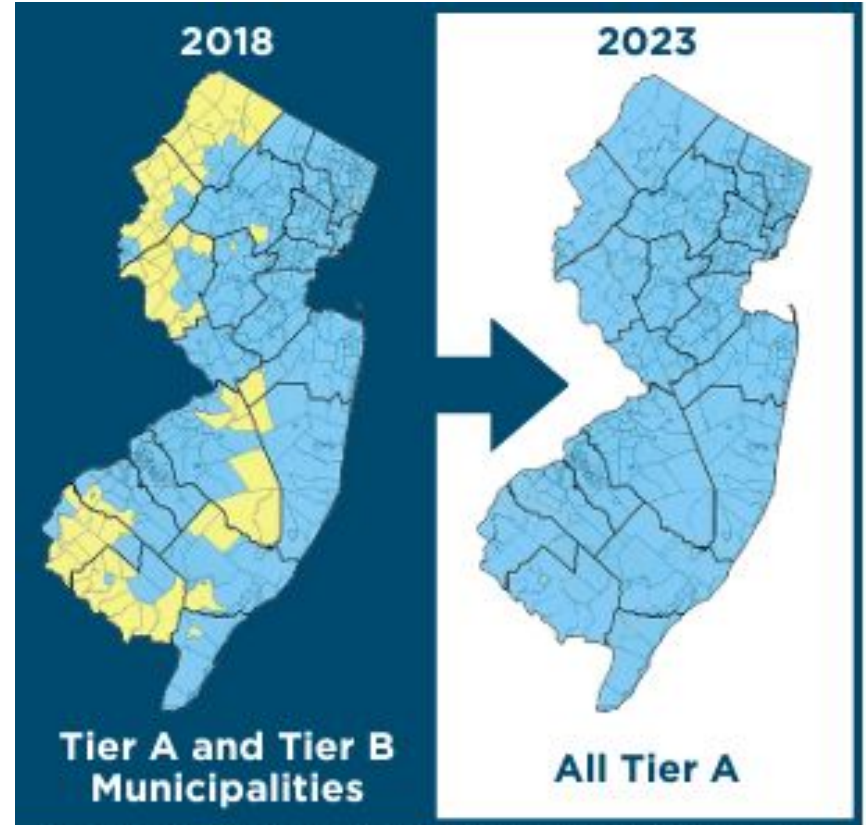
1. Public Involvement & Participation
2. Public education and outreach
3. Construction site stormwater runoff
4. Post construction runoff
5. Pollution prevention
6. MS4 outfall pipe mapping, illicit discharge control

## Permit Requirements

1. Stormwater Management Program
2. Six SBRs (above)
3. Watershed Improvement Plan
4. Additional and Optional Measures
5. Record keeping
6. Annual report and certification



# Who are the permittees?



Source: NJDEP, Bureau of Stormwater Permitting

# 2018 vs. 2023

- Revised street sweeping requirements
- Required mapping of entire MS4
- Improved municipal maintenance yard requirements
- Salt storage requirements
- Required dedicated stormwater webpage
- Increased training frequency
- Watershed Improvement Plans
- New Community Wide Ordinances
  - Tree protection ordinance
  - Privately owned salt storage ordinance

# WIPs

- Improve water quality by reducing MS4 contribution of pollutants to waterbodies
  - Based on listed impairments and TMDLs
- Reduce/eliminate flooding
- Develop final plan **with input from residents, businesses, neighboring towns, other dischargers**

**This process includes three phases**

1. Watershed Inventory Report
2. Watershed Assessment Report
3. Final Plan



# Public Participation Requirements

- Required in 2018 permit
- Shall implement a Public Education and Outreach Program
  - Focuses on educational and pollution prevention activities about the impacts of stormwater discharges on surface water and ground water and involves the public in reducing pollutants in stormwater
  - Annually conduct activities that total at least **12 points** and include activities from at **least three of the five categories**

# Public Participation Requirements

Category 1: General Public Outreach		
Activity	Description	Points
<b>Social Media</b>	<p>Post relevant stormwater materials on a municipal social media site, such as a Facebook, Instagram, or Twitter page. This information may include links to other stormwater related resources, including the municipality's stormwater webpage and the NJDEP stormwater website (<a href="http://www.njstormwater.org">www.njstormwater.org</a>).</p> <p>*One point awarded for each social media platform used. A maximum of 3 points is allowed.</p>	3*
<b>Newspaper Ad</b>	<p>Use Department created and approved stormwater education materials available on <a href="http://www.cleanwaternj.org">www.cleanwaternj.org</a> to publish an ad in a newspaper or newsletter that serves the municipality.</p> <p>*A maximum of 1 point is allowed.</p>	1*
<b>Radio/Television</b>	<p>Broadcast a stormwater-related radio or television public service announcement from <a href="http://www.cleanwaternj.org">www.cleanwaternj.org</a> on a local radio or municipal public service channel.</p> <p>*One point awarded for each media outlet used. A maximum of 2 points is allowed.</p>	2*
<b>Green Infrastructure Signage</b>	<p>Post signs at municipally owned green infrastructure sites that describe the function and importance of the infrastructure, contact phone number, municipal identification number, and/or website for more information.</p> <p>*New signs receive 0.5 points per sign. Existing signs that are maintained or upgraded receive 0.25 points per sign. A maximum of 5 points is allowed.</p>	5*



# Public Participation Requirements

<b>Category 5: Community Involvement Activities</b>		
<b>Activity</b>	<b>Description</b>	<b>Points</b>
<b>Volunteer Stormwater Assessment or Stream Monitoring</b>	Establish a volunteer stormwater facility assessment (inspection, inventory and/or mapping) or stream monitoring program for a waterbody within the municipality to gauge the health of the waterway through chemical, biological or visual monitoring protocols. Contact NJDEP's AmeriCorps NJ Watershed Ambassador Program or review USEPA National Directory of Volunteer Monitoring Programs.	3
<b>Rain Barrel Workshop</b>	Organize or participate in a rain barrel workshop. This could be a partnership exercise with a local watershed organization, university, school, youth/faith-based group, and/or another nonprofit.	3
<b>Rain Garden Workshop</b>	Organize or participate in a rain garden training or installation workshop. This could be a partnership exercise with a local watershed organization, university, school, youth/faith-based group, and/or another nonprofit.	3
<b>Community Event</b>	Organize or participate in the organization of a community event to carry out stormwater activities such as stormwater measure maintenance or a stream buffer restoration. The municipality may identify and enter into a partnership agreement with a local group such as a watershed organization, university, utility, school, youth/faith-based group, and/or other nonprofit to carry out these activities.	3
<b>Community Involvement</b>	Organize a project with a local organization to create and post signs at either green and/or gray stormwater infrastructure sites or facilities that describe the function and importance of the facility, contact phone number, municipal identification number, and/or website for more information.  *Signs receive 0.5 points per sign. A maximum of 5 points is allowed.	5*

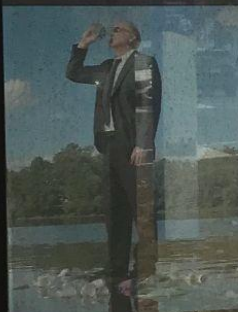
# Resources & Funding

- **Stormwater Assistance Grant:**  
<https://nj.gov/dep/wlm/grants/swgrant.html>
- **Municipal Stormwater Regulation Program:**  
[https://www.nj.gov/dep/dwq/msrp\\_home.htm](https://www.nj.gov/dep/dwq/msrp_home.htm)
- **MS4 Deliverables Timeline:**  
<https://www.nj.gov/dep/dwq/pdf/FINAL-Deliverables-Timelines-2023-MS4-Tier-A-Permit.pdf>
- **Mapping:**  
<https://gisdata-njdep.opendata.arcgis.com/>
- **New Jersey Future GI Municipal Toolkit:**  
<https://gitoolkit.njfuture.org/>

# NJPACT Quick Update

- **Comments on Inland Flood Protection Rules (Phase 1) submitted - GI Committee and Climate Resilience Committee co-submitted comments**
- **Waiting for enactment of Inland Flood Protection Rule**
- **NJ REAL Phase 2 to be released post-adoption of IFP Rule**

IF YOU LITTER IN  
THE STREET, YOU  
MIGHT AS WELL  
LITTER IN  
THE RIVER.



Rain washes pollutants into  
storm drains and directly into  
our lakes, rivers and the ocean.

So what can you do?

*Recycle & dispose of your  
trash properly!*



[www.cleanwaterNJ.org](http://www.cleanwaterNJ.org)

# Thank you!

Contact: [lsigmund@njfuture.org](mailto:lsigmund@njfuture.org)