

Lead in Drinking Water: A Permanent Solution for NJ

Speakers

Chris Daggett, former NJDEP Commissioner

Amy Goldsmith, Clean Water Action

Kareem Adeem, Newark Dept of Water & Sewer

Tom Shroba, New Jersey American Water

Gary Brune, New Jersey Future

Agenda

- Overview
- Primary Task Force Recommendations
- Next Steps
- Questions and Answers
- More Information

Jersey Water Works Lead in Drinking Water Task Force

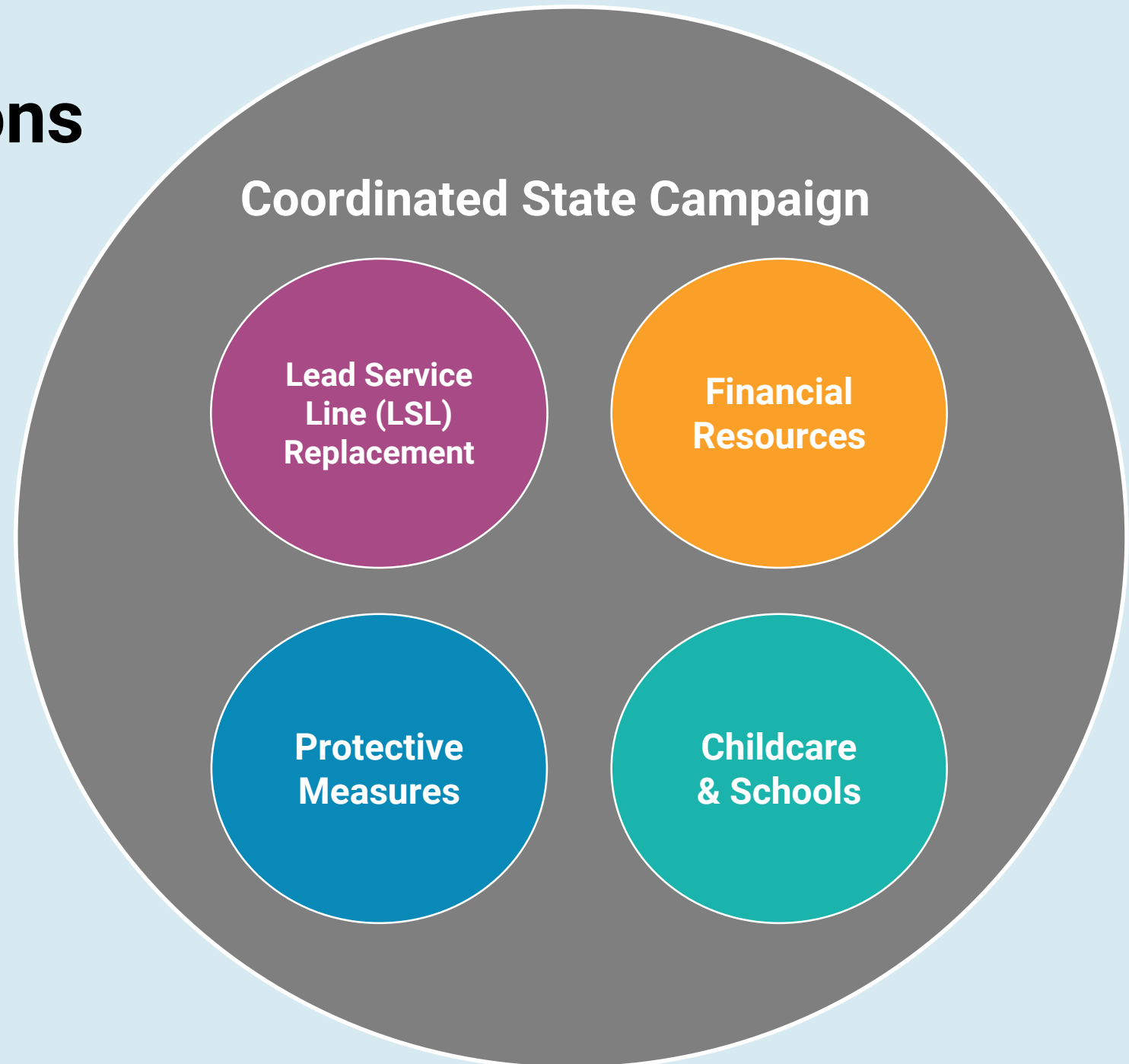


Guiding Principles

Solutions are...



Recommendations



Lead in Water is Widespread in New Jersey

1/3 water systems:
corrosion control



104 water systems with
LSLs (Aug, 2019)



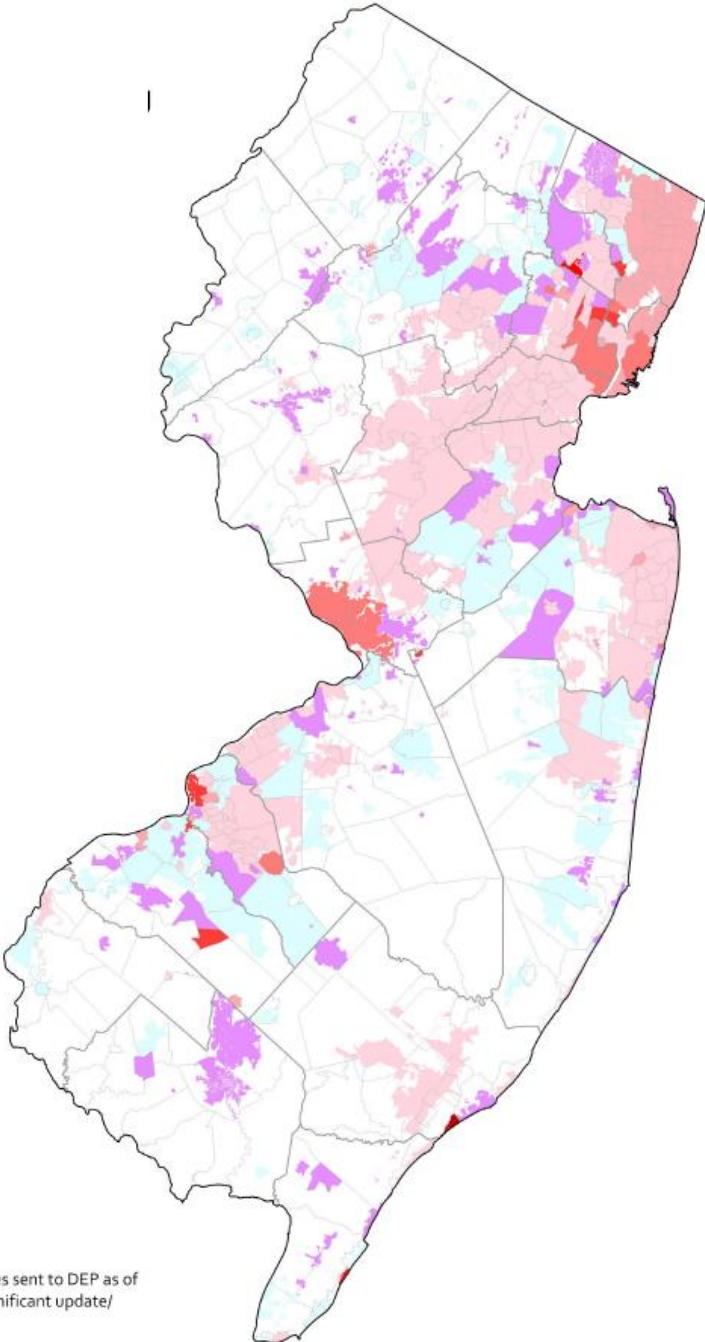
Over 380 schools:
lead in at least 1 outlet



Estimated Intensity of Lead Service Lines in NJ

Estimated percent of households with lead service line in water utility service area

- ≤ 5%
- 5 to 15%
- 15 to 30%
- 30 to 60%
- 60 to 80%
- > 80%
- zero lead service lines reported
- under review
- well water



Based on water utility estimates sent to DEP as of August 15, 2019 (subject to significant update/revision).

Coordinated Statewide Campaign

- Declare lead a public health threat
 - Coordinate: water, paint and soil
- Lead Ombudsman - maximize efficiency

Disclosure: Home Sales and Rentals (Legislation)

Require seller/landlord to divulge presence of lead:

- Add water to existing paint-related certificates
- Exempt properties built after 1986
- Create lead-free housing registry

Lead Service Line (LSL) Replacement



Lead Service Line Inventory (Legislation)

- Comprehensive
- Consistent
- Routinely updated
- Transparent (DEP and water system websites)
- Indemnification

Lead Service Line Replacement Program (Legislation)

- Replace all LSLs in 10 Years
- Ban partial LSL replacements
- Comprehensive: utility-owned and private LSLs
- Authorize property access (maximize efficiency)
- No cost share from property owner

Newark - Lead Service Line Replacement

- First NJ city to implement
- Funding source established
- Property access ordinance enacted
- No cost share from property owner
- LSL replacement contracts in place
- Economic impact on community
- Performance to date

Funding Sources



Funding Sources (Legislation)

Lead Service Line Replacement (\$1.8b - \$2.3b)

- Rate Recovery
 - Investor-owned and municipal utilities
- Subsidy Program

Rate Recovery

- Spread rate increases:
 - Over 10 year period
 - Across entire rate base
- Many communities: <15% households w. LSLs
- Water affordability
- LSLs/private property - not added to asset base

State Subsidy (\$500m)

State's role: ensure LSL removal across all communities
Means test @ water utility, not by individual

Key factors:

- Fiscal distress
- Communities with high exceedances and LSLs
- Rate increase otherwise required over 10 years

Protecting People in Their Homes



Protective/Regulatory Measures

- Water sampling
- Water quality parameters
- Public education
- Licensed water utility operators

Child Care and School Facilities



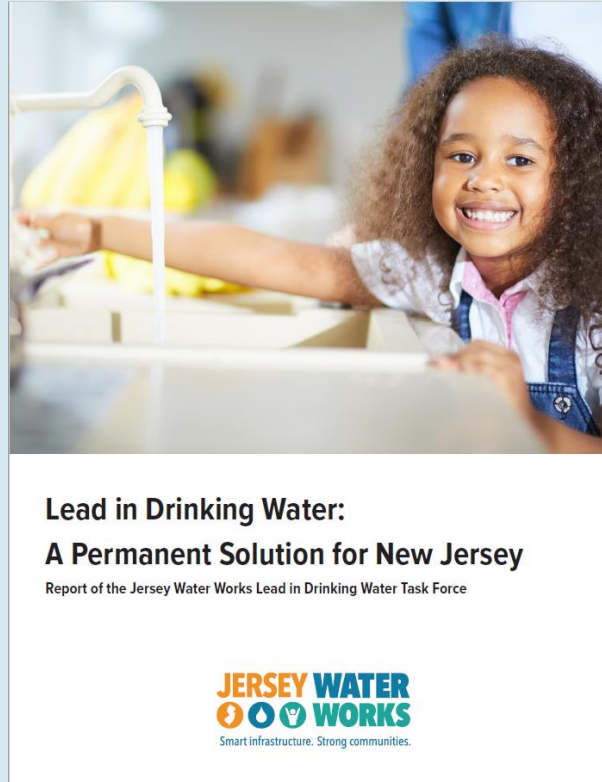
Child Care and School Facilities

- Uniform sampling cycle (3 years)
- Central database of test results
- Lower action limit - child care facilities?
- \$100m state bonds - water in NJ schools
- Lessons learned

Next Steps

- Executive Actions
- State Legislative Package
- Regulatory Update
- Holistic Campaign: Lead in Paint, Water and Soil

Questions and Answers



Find full report at:

www.jerseywaterworks.org/leadreport